



LVS-7500

Ensure Accuracy and Data Integrity on Each Label

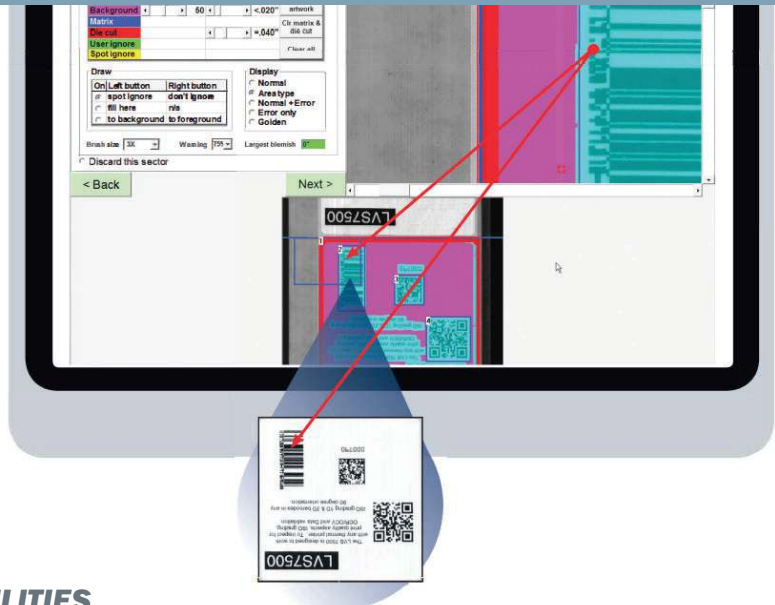
- Identify Defects
- Eliminate Fines and Disputes
- Reduce Rework
- Control Waste
- Avoid Liability
- Satisfy Regulatory Compliance Requirements

IDEAL APPLICATIONS:

- Pharmaceuticals
- Medical Devices
- Clinical Trials
- Contract Packaging
- Manufacturing
- Label Converting

LVS-7500

100% Label Inspection with LVS-7500



The LVS-7500 label inspection system provides 100% label inspection as labels are printed at production printing speeds. In the event of a label defect the printer is automatically stop ensuring that the defective label is confirmed by an operator and removed.

LVS-7500 CAPABILITIES

Barcode Validation (Reading of 1D and 2D Codes)

Barcode Validation inspects codes to determine if they are readable. No attempt is made to grade according to any standard.

Barcode Verification (Grading of 1D and 2D Codes)

Barcode Verification inspects any combination of 1D and 2D codes and grades them using the ISO 15415 and ISO 15416 standards. The software displays a real-time graph indicating the overall ISO grade allowing the operator to view trends in print quality for hundreds of previously inspected labels. As errors are detected, the graph changes color. Other error warning indicators are available including printer stop, light stack, alarm, etc.

Master to Label Comparison (Blemish Detection)

Master to Label Comparison identifies print faults, such as skews, smears, registration errors, die-cut errors and missing information. This module includes a variable data feature that recognizes expected variables within a pattern-matching zone but does not report the data as a blemish. Also includes a variable sensitivity setting for each label field inspected.

Optical Character Recognition (OCR)

The OCR function "reads" characters and reports the data content.

Optical Character Verification (OCV)

The OCV function ensures that a string of sequential characters are read and/or verified against a match file.

Number Validation

Number Validation verifies the expected order of any numerical series, detects duplicates and sequence errors, and matches variable numbers with external data files.

Data and Code Matching

Matching functionality provides confirmation that barcode data matches human-readable printed text.

System Features

Auto Setup

Software automatically identifies label fields allowing for rapid setup and changeover.

Job Retrieval

Quickly access previous jobs to run again, or modify formats for new jobs.

Alarm Matrix

Multiple output options for error notification including stop relay, light stack, onscreen warning, etc., set to user-defined thresholds.

Track and Trace

- Multiple security levels via traceable operator and supervisor password control.

- 21-CFR Part 11 Compliant Compliant-Ready.
- Audit trail of configuration changes and operator actions.

Data Management

- Job data is stored in CSV file format for ease of export.
- All records are date, time stamped and automatically archived.

- Remotely review errors and record acceptance or rejection action.
- Summary view of job setup and production runs provides quality control and operational insight.

ISO Verification

Challenge/Test	Details
Verify	Any combination of linear, matrix or stacked codes to ISO Print Quality Standards including: <ul style="list-style-type: none"> • ISO/IEC 15416 - Linear Verifier Conformance • ISO/IEC 15415 - Two-Dimensional (2D) Verifier Conformance
Barcode	Any orientation and number of codes on a label
Read and Analyze	1D and 2D to published International specifications, with an overall ISO grade
Minimum 1D Bar Width (X-Dimension)	Read-Only: 6.3 Mils (.0063") (.160 mm) Verification: 8.8 Mils (.0088") (.223 mm)
Minimum 2D Cell Size	Read-Only: 10.0 Mils (.0100") (.254 mm) Verification: 12.5 Mils (.0125") (.317 mm)
Reporting	Detailed data to be reported is in .csv format for extraction by the end user. Immediate reporting is available for viewing via a customer-supplied HMI.

Part Number	Description
7500-5-LT	LVS-7500 5" In-Line External Inspection System with Light Tower, Barcode Grading, OCR/OCV, Blemish Detection
7500-8-LT	LVS-7500 8" In-Line External Inspection System with Light Tower, Barcode Grading, OCR/OCV, Blemish Detection
7500-5-LT-BG	LVS-7500 5" In-Line External Inspection System with Light Tower, Barcode Grading Only
7500-8-LT-BG	LVS-7500 8" In-Line External Inspection System with Light Tower, Barcode Grading Only

Standard Configuration Includes

- LVS-7500 Drive (USB flash drive includes LVS-7500 Software and LVS-7500 User Documentation)
- LVS-7500 Installation and Quick Start Guide
- LVS-7500 Line Scan Image Sensor (5.4"/137 mm) or (8.5"/216 mm)
- Calibration Card (NIST-Traceable)
- USB Cable 2.0 Certified (6 feet) (1.8 m)
- Universal Power Supply, U.S. Line Cord/Plug
- Stop Motion Interface Unit with Light Tower

Minimum PC Requirements

(PC Supplied by Customer)

- Intel® Core™ 2 Quad Processor
- 8 GB RAM
- 500 GB Hard Drive
- 1280 x 1024 Screen Resolution
- Windows® 7 Professional
Windows® 8.1 Pro
Windows® 10 Pro
- Two available USB 2.0 ports (required for the Read Head and Stop Motion Unit/Light Tower Unit)

Characteristics

- 5.4" (137 mm) Image Sensor:
 - Maximum readable label width: 5.4" (137 mm)
 - Maximum width of web: 5.7" (145 mm)
- 8.5" (216 mm) Image Sensor:
 - Maximum readable label width: 8.5" (216 mm)
 - Maximum width of web: 9" (229 mm)

International Standards

- ISO/IEC 15415
- All supported ISO/IEC symbology specifications
- ISO/IEC 15416

Supported Symbologies

- Aztec
- Codabar
- Code 128
- Code 39
- Code 93
- Data Matrix
- Databar Expanded
- EAN-13

- EAN-13 (2-Digit Supplemental)
- EAN-13 (5-Digit Supplemental)
- EAN-8
- ECC-200 Data Matrix
- GS1-128
- GS1 Databar Limited
- GS1 Databar Stacked
- GS1 Databar-14
- GS1 Data Matrix
- Interleaved 2 of 5 (ITF)
- Laetus Pharmacode
- Micro QR Code
- PDF417
- QR Code UPC-A
- UPC-A (2-Digit Supplemental)
- UPC-A (5-Digit Supplemental)
- UPC-E
- UPC-E (2-Digit Supplemental)
- UPC-E (5-Digit Supplemental)

QMS CERTIFICATION

www.microscan.com/quality
©2018 Omron Microscan Systems, Inc. ML057B-EN-0518

Warranty – For current warranty information about this product, please visit www.microscan.com/warranty.



www.microscan.com